



jordan fishwick

DIDSBURY
Jefferson



Jefferson, Didsbury, M20 2DU

Guide Price £260,000

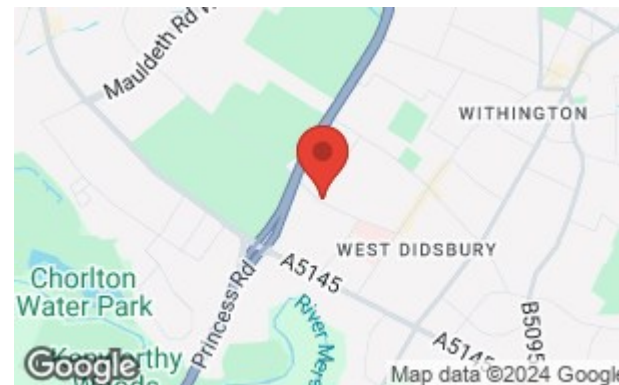


The Property

A TWO DOUBLE BEDROOM, TWO BATHROOM, first floor apartment ENJOYING an ideal southerly aspect within a GATED DEVELOPMENT which is just a 'short stroll' from the ever popular WEST DIDSBURY village and the array of bars and restaurants off Burton Road. 778 sq ft. In outline:- Communal entrance hall with a lift to all floors, private entrance hall with cloaks space and useful storage, open plan living/kitchen with integrated appliances and doors leading to communal gardens, master bedroom with en-suite shower room and ample fitted storage, second double bedroom and family bathroom with white suite. Externally there are well maintained communal grounds and electronic gated access to allocated private parking and locked bike stores too. *NO ONWARD CHAIN*

Directions

M20 2DU



- First floor apartment
- Two double bedrooms
- Bathroom & en-suite
- Open plan living/kitchen
- Integrated appliances
- Double glazed windows
- Gated development
- West Didsbury location
- Allocated parking
- No onward chain

Postcode - M20 2DU

EPC Rating - C

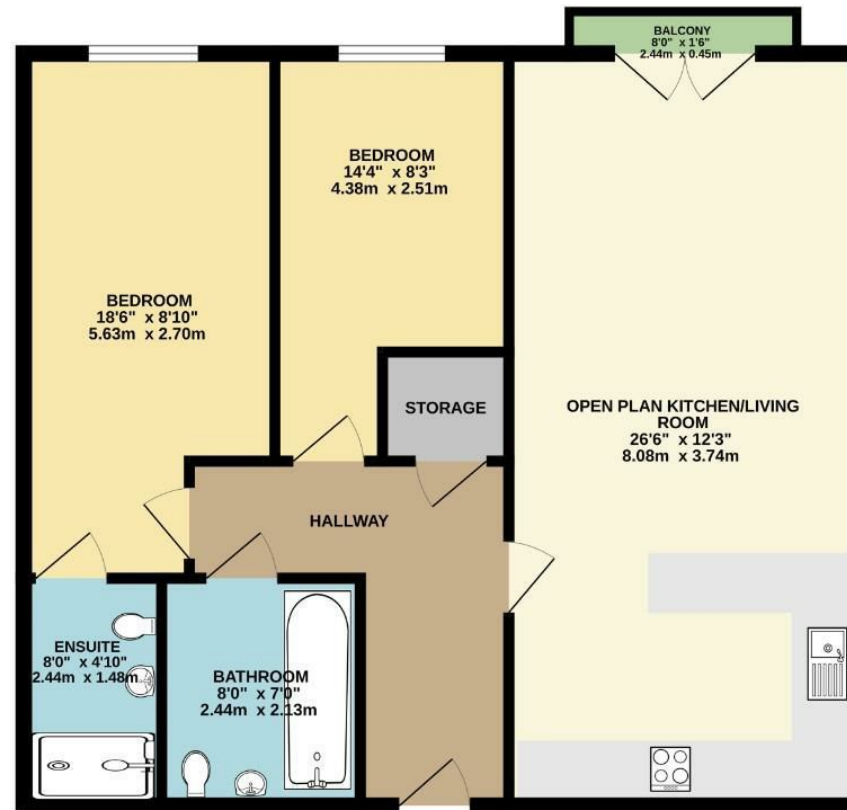
Floor Area - 778.00 sq ft

Local Authority - Manchester City Council

Council Tax - D



FIRST FLOOR
778 sq.ft. (72.3 sq.m.) approx.



TOTAL FLOOR AREA: 778 sq.ft. (72.3 sq.m.) approx.
Measurements are approximate. Not to scale. Illustrative purposes only.
Made with Metropix ©2024



These particulars are believed to be accurate but they are not guaranteed and do not form a contract. Neither Jordan Fishwick nor the vendor or lessor accept any responsibility in respect of these particulars, which are not intended to be statements or representations of fact and any intending purchaser or lessee must satisfy himself by inspection or otherwise as to the correctness of each of the statements contained in these particulars. Any floorplans on this brochure are for illustrative purposes only and are not necessarily to scale.

Offices also at: Wilmslow, Macclesfield, Hale, Sale, Chorlton, Glossop, Manchester & Salford

757-759 Wilmslow Road, Didsbury Village, Manchester

0161 445 4480

didsbury@jordanfishwick.co.uk
www.jordanfishwick.co.uk